

# Venture Out Fest – 2022

## Event Layout – Main Base

Saturday, June 18<sup>th</sup> 9am – 6pm

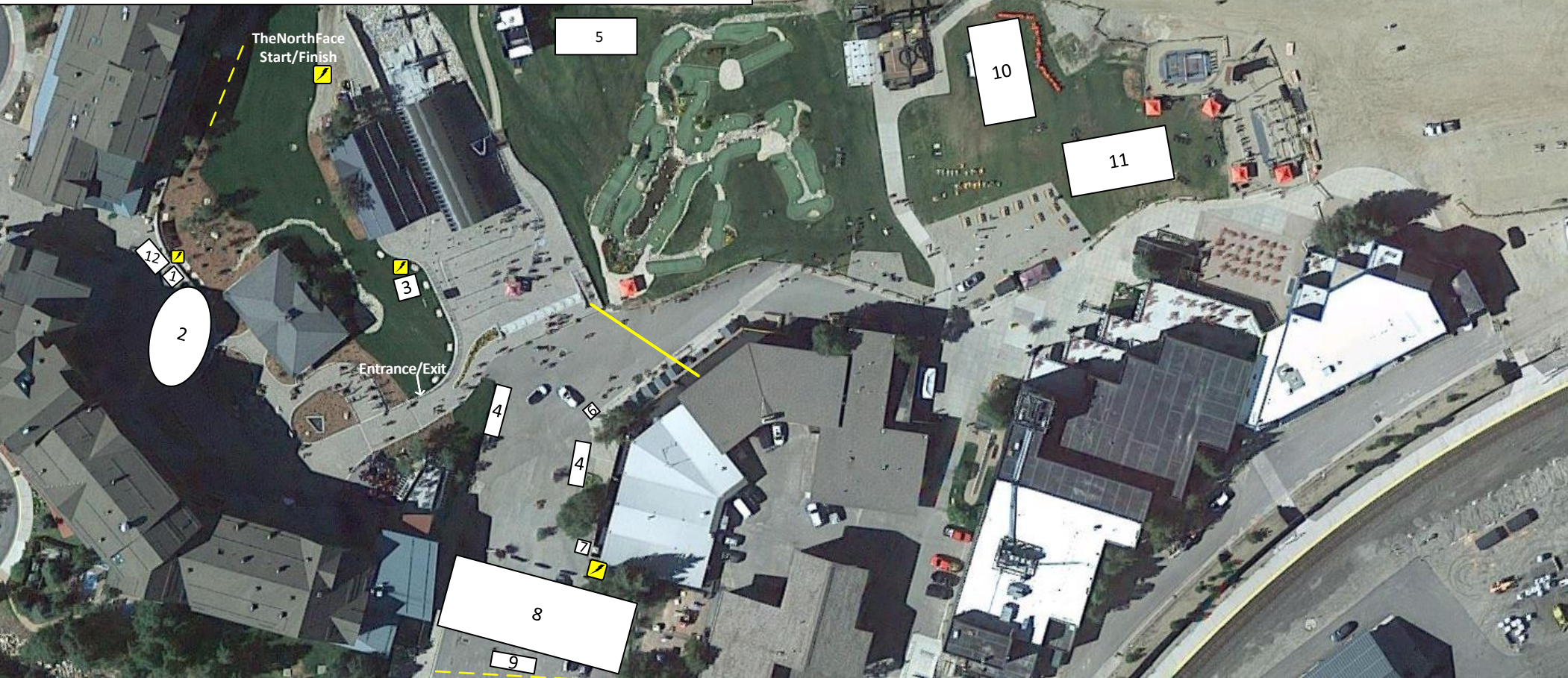
Friday, June 17<sup>th</sup>

Load-in: 8am DockDogs

Saturday, June 18<sup>th</sup>

Load-in: 7am – 8:30am (some vendors do not have a huge set up and will be coming in at a later time)

Load-out: 6pm (some vendors will start their load-out earlier)



### Vendors

1 – Grand County Pet Pals (10x10)

2 – Doga (yoga with your dog) (Village plaza stage)

3 – The North Face Basecamp/3k fun run (20x20)

4 – Toyota & Colorado Overlander (20x30 & 10x20)

5 – Grand County Search and Rescue (10x20)

6 – Headwaters Trails Alliance (10x10)

7 – DockDogs registration tent (10x10)

8 – DockDogs pool/competition space (70x100)

9 – Venture Out sign (5x12)

10 & 11 – Volleyball courts (40x70)

12 – Superior Ink Printing (10x20)



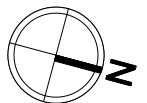
Barricade



Slackline



Power





# Venture Out Fest – 2022

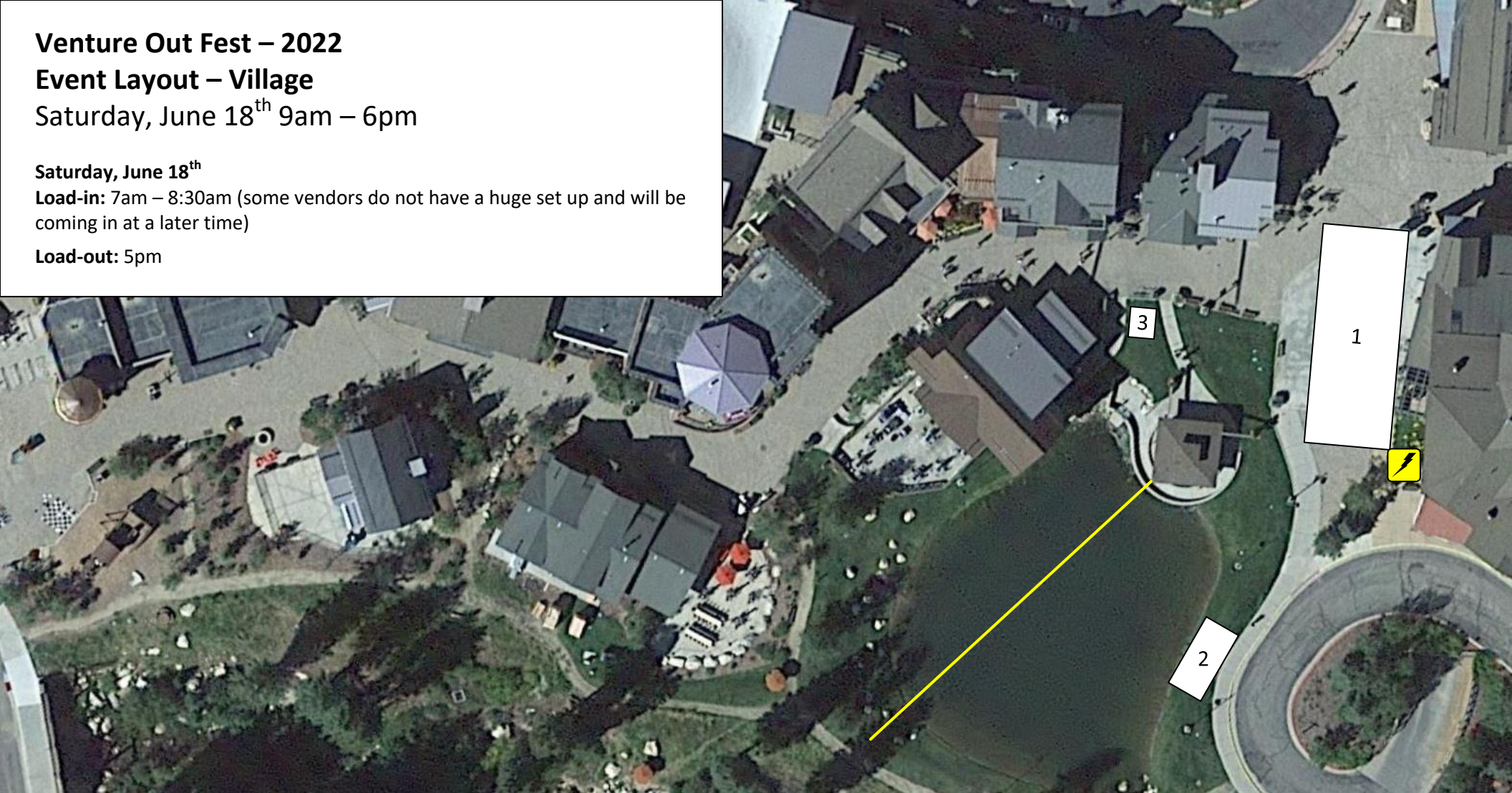
## Event Layout – Village

Saturday, June 18<sup>th</sup> 9am – 6pm

Saturday, June 18<sup>th</sup>

Load-in: 7am – 8:30am (some vendors do not have a huge set up and will be coming in at a later time)

Load-out: 5pm




### Vendors

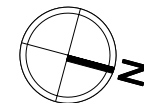
- 1 – Yellow Designs BMX stunt group – bmx stunt demos
- 2 – Huge Fly Fisherman – fly fishing demos
- 3 – Discover Breathe slacklining interactive

### Village Gazebo

Discover Breathe Slacklining demos  
Live Music 11am – 4pm

 Slackline for demonstration

 Power







## **Venture Out Fest – 2022**

### **Event Layout – Sunspot**

**Saturday, June 18<sup>th</sup> 9am – 6pm**

**Saturday, June 18<sup>th</sup>**

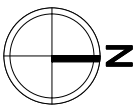
**Load-in:** 8:30am Fraser Valley Arts will head up the Summer road to load items up.

**Load-out:** 3pm

#### **Vendors**

1 – Fraser Valley Arts Plein Air

2 – Doga (yoga with your dog)





**The North Face – 3k Fun Run**

**Registration:** 9am – 1:30pm

**Race Start/Open:** 11am – 2pm

**Route:** Start on Jane corridor at the Gondola, take Jane corridor and make loop around the Jane Café, head back on Jane corridor, and Finish at the Gondola.

**Post-race party:** 2 – 4pm

**Rules and Regulations:**

- The race is limited to 300 racers.
- NO water stops. Bring a water bottle or wear a camelback.
- Prepare for rain or shine
- NO strollers, bikers, or roller-bladers.
- YES to dogs on leashes.
- Awards - top 3 male and female racers will be recognized.

**WAIVERS**

Participants will have to sign the Winter Park Resort waiver and Race waivers.

